



Save the Children

THE JOURNEY OF LOCAL RESPONSE POOL FUND IN SOUTH SUDAN

EDUCATION CANNOT WAIT

Save the Children

"MULTI-YEAR RESILIENCE PROGRAMME IN SOUTH SUDAN"

Education Continuity

Save the Children

Save the Children Code of Conduct

This Code of Conduct policy applies to Save the Children International (SCI) employees, trustees, volunteers, interns, trainees, contractors, consultants and others who represent Save the Children in any capacity. The policy applies to all SCI staff and to all SCI contractors, consultants and other staff who represent SCI in any capacity. For this reason, all those who work for SCI who represent the organization in any capacity are required to sign a declaration confirming that they have read and understood this Code of Conduct and agree to comply with its requirements at all times.

Principles

1. I will work solely to safeguard children.

2. I will protect Save the Children's Assets and Resources.

3. I will ensure the safety and wellbeing of myself and others.

4. I will ensure the safety and wellbeing of myself and others.

5. I will ensure the safety and wellbeing of myself and others.

6. I will ensure the safety and wellbeing of myself and others.

Save the Children

LRPF SIGNING PARTNERSHIP CEREMONY

SOUTH SUDAN COUNTRY OFFICE

June 2023



INTRODUCTION & OVERVIEW

THE JOURNEY OF LOCAL RESPONSE POOLED FUND IN SOUTH SUDAN



Ian Vale, Save the Children's Regional Director for East and Southern Africa, and Pornpun Jib Rabiltoosaporn, Country Director of Save the Children South Sudan, met with partners to discuss better local approaches to save children's lives, protect their rights, and fulfill their potential in South Sudan.

Photo: Save the Children

The humanitarian crisis in South Sudan has become increasingly complex, with armed violence, displacement, food insecurity, and limited access to essential services affecting many communities. Despite overwhelming obstacles, local and national organizations have been instrumental in meeting the needs of the affected communities. The resources they require to do their work effectively, notably in terms of finance, technical assistance and information, are frequently difficult for them to get.

The idea of localization has gained traction recently as a result of the critical role that local and national players play in humanitarian response. By recognizing the inherent strength, capabilities, and expertise of local and national players in addressing the needs of their communities, localization seeks to reorient the focus of humanitarian assistance away from international actors and toward the local actors.

The Local Response Pooled Fund (LRPF) for local NGOs was launched in South Sudan in September 2021 in accordance with these guiding principles. With the help of this creative funding structure, local and national organizations are able to reach the most vulnerable and neglected communities. To ensure that the impacted people remain at the center of the response, the LRPF is created to be totally locally led. The LRPF seeks to improve the efficacy, efficiency, and sustainability of

humanitarian interventions in South Sudan through strengthening local actors.

The establishment of the LRPF South Sudan is an important step towards improving local ownership, leadership, and partnership in the humanitarian response. The LRPF aspires to promote and ensure that the most vulnerable and undeserved communities receive crucial humanitarian assistance by empowering local and national actors and giving communities the highest priority in all actions. This cutting-edge funding modality promotes cooperation, coordination, and resilience building. It aims to create space for sustainable and locally driven response that efficiently channels resources to those who require them the most.

Save the Children would like to express its heartfelt gratitude to NGO Forum and its members for their collaborative efforts in co-creating the Local Response Pooled Fund (LRPF) concept, which has significant impact on the communities.

Currently, DANIDA through Save the Children Denmark and Center for Disaster Philanthropy through Save the Children US are funding the LRPF in South Sudan.

SPECIFIC OBJECTIVES OF LRPF

The LRPF aims to build the capacity of local NGOs to be able to access donor funding and to swiftly and directly respond to emergencies.

The LRPF provides local NGOs influencing space to push forward the Grand Bargain agenda in the country. It also gives local humanitarian actors opportunities to develop and implement relevant actions to reach communities in high-risk and hard-to-reach areas across South Sudan.

The LRPF's funding modality centers around the needs of affected populations through information sharing and communication, consultations, and direct engagement with the affected population in identifying needs, design of interventions, project implementation, and evaluation.

Ahmed Omar Ibrahim, Director of Program Operations for Save the Children South Sudan spoke at the LRPF's partnership signing ceremony in Juba, South Sudan.



Why LRPF is needed ?

THE JOURNEY OF LOCAL RESPONSE POOLED FUND IN SOUTH SUDAN



The LRPF is a distinctive, significant, and one-of-a-kind mechanism in the country that meets the requirements and challenges faced by local actors in humanitarian response. It contributes to a more inclusive, sustainable, and locally led approach to humanitarian assistance, eventually helping the communities in need by offering funding, empowerment, and capacity-building opportunities. Access to funding, rapid humanitarian response, empowering local actors, localization of humanitarian assistance, enhanced community engagement, strengthened local capacities, advocacy for local actors, strengthening the local economy, cultural sensitivity and contextual understanding, community empowerment and ownership, localization of knowledge and expertise, increased accountability and transparency, sustainable development, resilience, and others are among the key benefits of the fund.

THE FOLLOWINGS ARE REASONS WHY LRPF IS IMPORTANT:



Access to Funding:

The LRPF gives local NGOs access to funding that they might not otherwise secure. It addresses the challenge of limited resources by offering financial support to local actors, enabling them to implement essential programs and respond effectively to the needs of communities affected by crisis.

Rapid Humanitarian Response:

The fund is designed to facilitate rapid response actions by local NGOs. The LRPF enables local actors to quickly address the needs of communities in crisis situations, by giving rapid access to funds, reaching the most vulnerable and often neglected households and communities, even in hard-to-reach areas.



Empowering Local Humanitarian Actors:

The LRPF empowers local NGOs and community-based organizations by recognizing their skills, talents and local context knowledge. It enhances their role as key humanitarian responders, allowing them to take the lead in addressing communities' needs. This empowerment fosters ownership and strengthens local capability, both which contribute to long term development and resilience.



Increased Local Capacity:

The LRPF invests in institutional and technical capacities of local NGOs. It enables local actors to improve their skills, knowledge, and efficacy in delivering humanitarian assistance by providing chances for training, mentoring, and networking. Local capacity building adds to the long-term viability and resilience of local NGOs, as well as their ability to respond to future crises.



Advocacy for Local Actors:

The fund serves as a platform for advocating for the recognition and support of local NGOs in the humanitarian sector. The LRPF raises awareness among international donors, humanitarian organizations, and decision-makers about the importance of investing in and collaborating with local NGOs by providing the effectiveness and influence of local actors through successful projects.



Community Engagement, Empowerment and Ownership:

In humanitarian response, the LRPF promotes community empowerment and ownership. By supporting local NGOs, the fund enables communities to have an active role in recognizing their needs, designing interventions, and implementing projects. This participatory approach fosters a sense of communities' ownership and responsibility. It helps ensuring that the interventions are durable and aligned with communities' long-term aspirations.

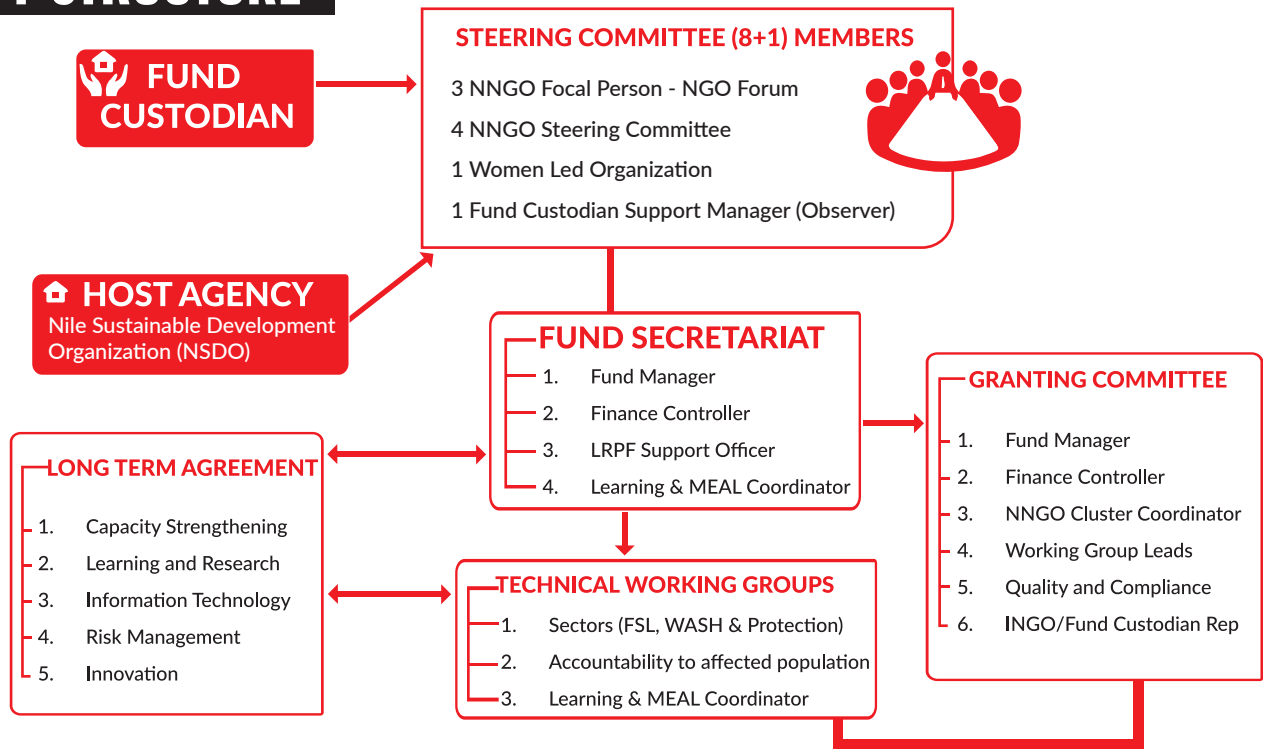


Partnerships and Collaboration:

The LRPF promotes partnerships and collaboration among local NGOs, international donors, and humanitarian organizations. This teamwork makes it easier to share knowledge, pool resources, and learn from each other. Local and international actors can leverage their respective capabilities and resources by collaborating, resulting in more impactful and comprehensive humanitarian responses.



LRPF STRUCTURE



FUNDAMENTAL PRINCIPALS OF THE LRPF FUNDING MODALITY

Grand Bargain Principles:

A major concept of this intervention is achieving critical mass of quality funding, which is one of the Grand Bargain's enabling goals. This will enable for a more effective and efficient response with more visibility and accountability, improved support for local responder leadership, delivery, and capacity, as well as increased affected communities' participation in resolving humanitarian needs. In designing the funding modality, international efforts will be made to ensure these enabling priorities and key pillars:

- 1) Flexibility, predictability, transparency, and tracking
- 2) Equitable and principled partnerships
- 3) Accountability and inclusion
- 4) Prioritization and coordination

Value for Money:

The management structure of the funding modalities and processes will assure value for money without compromising the component of quality and effectiveness as well as resource utilization efficiency.

Localization:

The LRPF's primary goal is to pilot a model that empowers local partners and prioritizes localization. This will entail improving the efficiency of funding to local and national actors, streamlining the transaction chain, lowering legislative hurdles to funding local actors, and addressing informal funding barriers.





Partners attended the Supporting Effective Humanitarian Partnership Orientation Workshop at the NGO Forum

Photo: Save the Children

LRPF fund receiver's selection and grants management process

The primary idea of the Local Response Pooled Fund (LRPF) is to ensure fair access to funds for local organizations in South Sudan. Equitable access ensures that all qualifying local organizations, regardless of size, location, or funding history, receive fair resource allocation and equal chances.

The design of the funding mechanism and selection process is critical. Transparency and inclusion are required in the application and selection process of members. This includes the criteria used to evaluate project application as well as the leadership and participation of local organizations in decision-making. Another important factor is the LRPF's commitment to support underprivileged and vulnerable communities. Gender equity and the participation of women-led organizations in the funding process are also another important consideration.

Impact of LRPF on vulnerable communities

Since its inception, South Sudan Local Response Pooled Fund (LRPF) has achieved great progress in reaching and providing assistances in critical areas of needs.

The LRPF has exhibited excellent geographical reach, ensuring that help reaches even the most remote and difficult-to-reach places where disadvantaged communities are frequently found. The LRPF has made attempts to

focus on key sectors and intervention areas that are crucial for the well-being of disadvantaged communities. Healthcare, education, water and sanitation, food security, and protection are among these sectors. By focusing on these core sectors, the LRPF has been able to provide critical assistances and contribute to an increase in the resilience of South Sudan's vulnerable communities. Since its inception, the LRPF has assisted 19 partners in obtaining funding for locally-led programs that benefit communities and children in South Sudan.

During the first phase, nearly 2,000 IDP households received assistances from the LRPF in reducing the negative effects of COVID-19, floods, and inter/intra communal violence during the period when COVID-19 pandemic and other shocks struck the nation. During the current phase of LRPF, the locally led interventions aim to reach approximately 47,000 disadvantaged and at-risk adults and children across the country. The fund has made it possible for local organizations to carry out interventions that directly assist the most vulnerable people and children by providing timely and need-based assistances. These assistances have significantly improved the lives of local communities and children by meeting their immediate needs, through locally designed interventions, and promoting resilience building, through communities' ownership and participation.



THE JOURNEY OF LOCAL RESPONSE POOL FUND IN SOUTH SUDAN

FOR MORE INFORMATION:

Sophie Chambers
Program Development and Quality Director
+211 (0) 926 804 549
sophie.chambers@savethechildren.org

Gabriel Chol
Interim LRPF Program Manager
+211 (0) 922 820 005
gabriel.chol@savethechildren.org

Sarah*, 14, who escaped early child marriage through Save the Children intervention smiles while receiving dignity kits and scholastic materials.



Photo: Save the Children